

KINGS POINT AMATEUR RADIO CLUB

*More Than 25 Years of Voluntary Emergency Communications Service to Our Community
ARRL AFFILIATED CLUB*

Officers

President

Dick Bishop, W4NWD
633-7157

Vice President

Sam Brandes, N2OF
601-0843

Secretary

Monica Miller, N1KEQ
642-3538

Treasurer

Bill Love, W2LOV
634-2749

Committee Chairpersons

Club Room Manager

Joe White, KA1KO

KPARC Web Master

Bill Barron, W1WAB

Antenna Managers

Lew Merrill, N4LD

Jim Malanowski, W3SKI

Weather Station

Manager

Alan Blackwell, K9YI

Program Chairman

Mike Burks, KG4TGP

Alan Blackwell, K9YI

KPARC Repeaters

2 Meter

147.090 PL 162.2

70 CM

442.450 PL 162.2

Echo Link Node

311633

Meetings

Second Monday of every month in the main clubhouse craft room at 2:00 p.m.

www.kparc.org



Dick Bishop, W4NWD

From The President

Club members, hurricane season has officially begun. The first of the named storms was in the Pacific and passed without any published damage in early June. Most of our local safety and EMCOM agencies have had some form of

update,

planning meeting, simulated exercise, or at least reviewed their emergency plans.

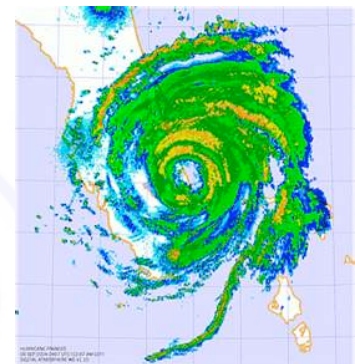
However, The largest scale emergency exercise, takes place the last weekend in June. Amateur Radio Field Day, and international event, is really a practice to test emergency capability.

Surprised!, you did not think of Field Day as a emergency exercise. Just look at the preparation going into setting up for the event. Speedily setup antennas, generator and battery power, hours of continuous of operation, camping type facilities, food and drinks in coolers and so on. Transmitting messages, making numerous contacts, keeping records, all would support real emergency events.

So, as we have fun, and exercise our equipment, we learn what works, and what causes problems. The follow up discussions share all that we have learned and each year we get better. I hope each of you get involved before, during or after the event.

73's

Dick



Amateur Radio Antennas

A Ham radio antenna tower is usually a metal tower that hams use to support their antennas. There's also an interesting story behind birth of the terms Ham or amateur radio. The actual signification of the term 'ham' was lost but there are several theories that explain its provenience. For example some say it was an insult at first, others say it's just the simplified version of the term amateur and so on.

In order to understand what a Antenna Tower is, you must understand what it's used for, and to understand that one should know what do 'hams' (as the amateur radio operators call themselves) actually do. First of all, in order to become a 'ham' you need to have an Amateur Radio Operator. Now there are over 2.5 million amateur radio operators with a license. As a consequence of being a licensed amateur radio operator you must oblige the FCC (Federal **Communications** Commission) regulation. These regulations include standards for both equipment used and radio frequencies used; consequently the antenna tower must oblige the FCC regulations too.

The purpose of an antenna tower is to sustain the antenna that 'hams' need to **communicate** with. With towers 'hams' use larger antennas that are required by the longer wavelengths of lower frequencies, but in general all kinds of antennas are used. The average 146-MHz (2-meter) antenna is a 19 inch long quarter wave whip, but hams are known to use a variety of other antennas and even cheaper solutions (such as aluminum ladders, flagpoles with buried coaxial cable, etc). In any case it's important to know what kind of antenna you are going to use for it will significantly influence the tower you will use.

There are many factors that one must take into account of when **talking** about an antenna tower, such as the type and size of the antenna, the weather in the region the tower is going to be installed, the wind-load rating of the area (for United States towers rated to sustain a wind-load of at least 87 mph should be fine) and so on. The terrain on which the tower will be installed is also very important, as are the installation processes and the constant maintenance of the tower. Other additional features are also important, for example some producers equip



their towers with systems that put up and bring down the antenna automatically so you don't need to climb the tower yourself. Antenna towers can be installed directly on the ground or on top of houses or

other buildings. House top antenna towers are generally used by starting 'hams' that lack both the resources and the experience to install a bigger, stand alone antenna tower. However this is not necessarily the case, seasoned 'hams' use sometimes house top towers when their main antenna tower gets too crowded.

So, when talking about antenna towers you should keep in mind what antenna you're going to use, where are you going to install the tower, the weather in your area and of course your own experience with towers and antennas.

In Memorium



WILLIAM (Bill) J. MADIGAN

N4BJM

July 5, 1944 - May 20, 2011

Member

**Sun City Amateur Radio Club
Kings Point Amateur Radio Club
Sheriffs Amateur Radio Club**



KPARC Field Day

KPARC will participate in Field Day at our clubroom on June 24 and 25. This will be a simplified Field Day just for fun, and to learn a little bit about field day operations. We will have dinner about 5:30 pm on Saturday in the Communications room next door to our clubroom. Our core hours will be from noon on Saturday to about 6-7 pm. The radio room will be open to any one wanting to extend the hours or come back on Sunday.

We will put up special antennas and operate on emergency power to gain points. Also, we plan to operate a QRP rig and a GoTo--rig for listening. We will give instructions on operating and logging so no previous Field Day experience is needed, YL's and XYL's are encourager to join in the fun, women's voices are big draws to Field Day contacts. Remember Field Day is a simulation of a real emergency.

Dinner will be pizza, home made chilly, salad, drinks, and probably a desert. The dinner is open to all, no matter if you come to operate the radios or just for the social fun. Just let Bill and Dotty Love know (phone 634-2749) if you can come so they know how much food to order, the cost will be \$5.00.

**NEXT KPARC MEETING
JULY 11 AT 2:00 pm
CRAFT ROOM**